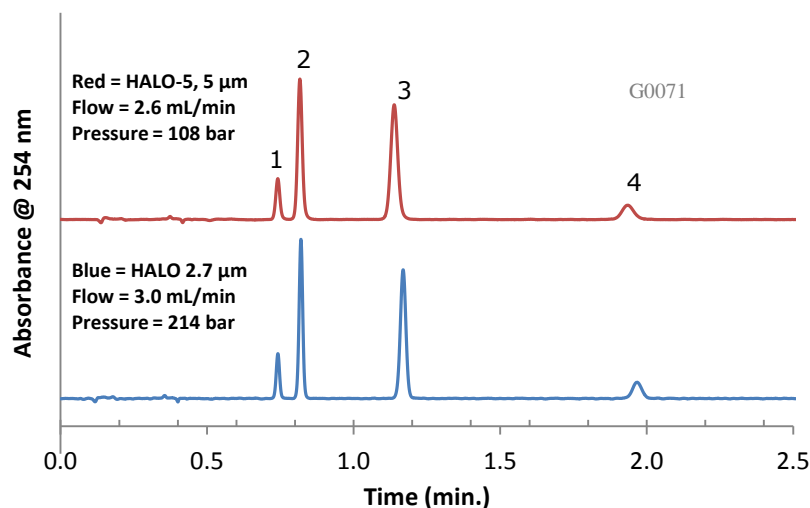


## Comparable Selectivity between HALO-5 and HALO 2.7 µm HILIC Phases



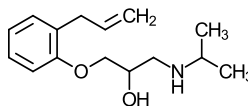
### PEAK IDENTITIES:

1. Alprenolol
2. Pindolol
3. Acebutolol
4. Atenolol

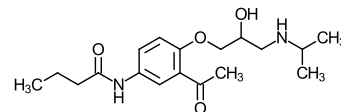
### TEST CONDITIONS:

Column 1: 4.6 x 100 mm, HALO 5 µm HILIC  
Part Number: 95814-601  
Column 2: 4.6 x 100 mm, HALO 2.7 µm HILIC  
Part Number: 92814-601  
Mobile Phase: 11/89: A/B  
A = 0.1 M Ammonium formate, pH=3 (adj.)  
B = Acetonitrile  
Flow Rate: See chart  
Pressure: See chart  
Temperature: 30°C  
Detection: UV 254 nm, VWD  
Injection Volume: 2.0 µL  
Sample Solvent: mobile phase  
Response Time: 0.02 sec.  
Flow Cell: 2.5 µL semi-micro  
LC System: Shimadzu Prominence UFLC XR  
ECV: ~14 µL

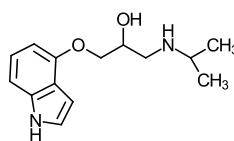
### STRUCTURES:



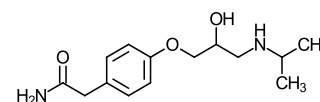
Alprenolol



Acebutolol



Pindolol



Atenolol

Because of similar selectivities, easy method transfer is accomplished between the 5 µm and 2.7 µm HALO HILIC phases with small changes in flow rate.