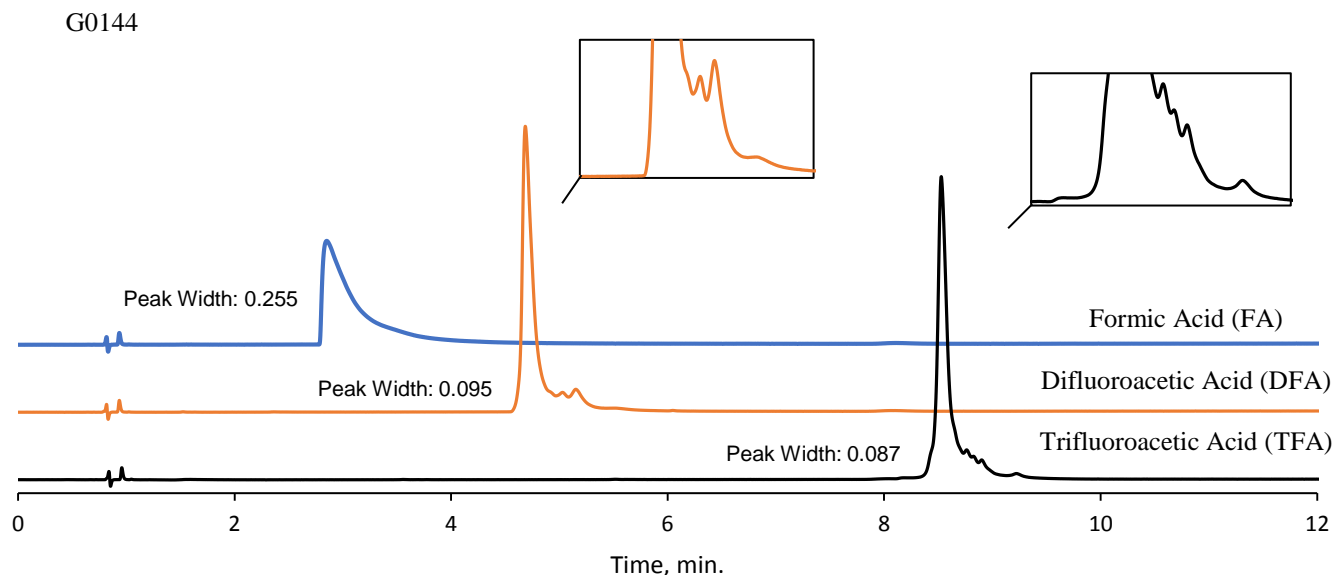


Effect of Acid Modifiers on Intact mAb Peak Shape



TEST CONDITIONS:

Column: HALO 1000Å C4, 2.7µm, 2.1 x 150 mm
Part Number: 92712-714

Mobile Phase:

A= Water, with 0.1% FA, DFA, or TFA as noted

B= 80/20 ACN/Water, with 0.1% FA, DFA, or TFA as noted

Gradient:

Time (min.)	%B
0.00	35.0
12.00	47.5

Flow Rate: 0.4 mL/min

Initial Pressure: 218 bar

Temperature: 80 °C

Injection Volume: 2 µL

Sample Solvent: 30/70 ACN/Water

Detection: UV 280 nm, PDA

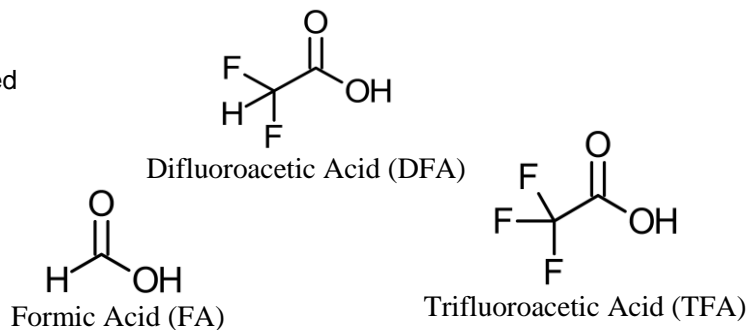
Data Rate: 12.5 Hz

Response Time: 0.05 sec

Flow Cell: 1 µL

LC System: Shimadzu Nexera X2

STRUCTURES:



Trastuzumab (~148 kDa) is a monoclonal antibody (mAb) used to treat breast cancer. TFA and DFA can be used as mobile phase additives instead of formic acid to provide much narrower and more symmetrical peaks, and to allow adjustments to retention and resolution among minor variants.